



Mobile



Cellular



Cloud



Wireless Locking



Embedded



Enterprise

Continental Enterprise CA-2 Access Control Panel 2-Doors, Expandable to 4

The all-new CA-2 Controller is a versatile & robust solution designed for integrators seeking advanced access control capabilities from 2, up to 4 doors with expander, CA-2XB. CA-2 is compatible and ready for easy integration on the MVP Access Pro platform, a cloud platform version of it Continental Access CA4K Enterprise Access Control software, literally with the flip of a switch

The next-gen controller includes eight inputs, one tamper alarm, & five relay outputs, which can be expanded to 16 with the CA-2XB. The onboard relays are Form C & can be configured as either dry or wet. Dry relays handle a maximum load of 12/24V, up to 28V AC/DC, with a capacity of 2 amps per circuit. Wet relays are rated at 12VDC & support a total load of 1.6 amps across all four relays. For even greater versatility, the system can be expanded with up to 48 additional supervised inputs and outputs using optional IO Boards.

The CA-2 Controller is housed in a secure locking steel enclosure and includes a power supply and 7AH battery, ensuring reliable operation. It provides 1.2 amps at 12VDC for accessories such as power strikes and mag-locks, in addition to powering the controller and two readers. Optional enhancements, including a plug-in network interface, memory expansion & additional input/output capabilities, make the CA-2 an adaptable and scalable choice for a variety of access needs. All Continental's controllers feature extensive multi-stage lightning/transient protection on-board for maximum reliability, even in harsh environments.

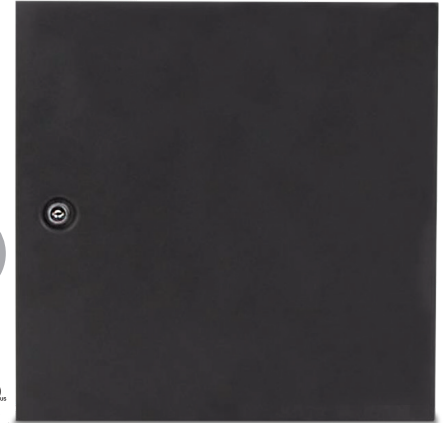
CA-2 uses choice of traditional CA4K 1.2 enterprise security management or Cloud-based MVP Access Pro and can be intermixed with the existing single-door (2100), two-door (1300) and the eight/sixteen-door (2800) hardwired Access Control Panels, plus Alarm Lock Wireless Trilogy Network Locks, Gateways, Expanders and NetPanel for applications indoors and out, controlling entranced, interior doors, gates etc.

The systems feature seamless, smart native integration, fast communications. It supports up to two readers and provides a range of features tailored to meet the demands of modern integrated access systems. Accepts industry standard Weigand output devices and supports virtually all card/reader technologies. Mobile, NFC, Proximity, Smart, Biometric, Magnetic Stripe, Barcode, Weigand & Keypad readers are easily connected and controlled.

CAPABILITIES:

- CA-2 2-Door Controller. Expandable to 4 w/ CA-2XB
- 100,000 cards standard
- 2 Five-wire, Weigand output readers. Expandable to four
- 120vac Input Voltage
- Cloud Mode Select Jumper support easily switch between standard CA4K Server Mode and Cloud Mode for MVP Access
- Built-In Ethernet Port
- AES 128-bit encryption
- Reader Power: Each Reader is rated for 12VDC @ 200mA and 5VDC @ 100mA. Total
- Dual OSDP V1/RS485 Reader outputs
- 1 dedicated Fire Alarm Input
- 1000 Standard transaction buffer. FRAM 512KB Dedicated Transaction Buffer
- 16MB On Board Memory
- 10/100Base-T Ethernet Interface
- Up to 64 CA-2 Controllers on a Ethernet to Repeat RS422 Network
- 256 Time schedules
- 1,000 Access groups
- Supports Peer-To-Peer Lockdown built-in

NEW! CA-2 PANEL

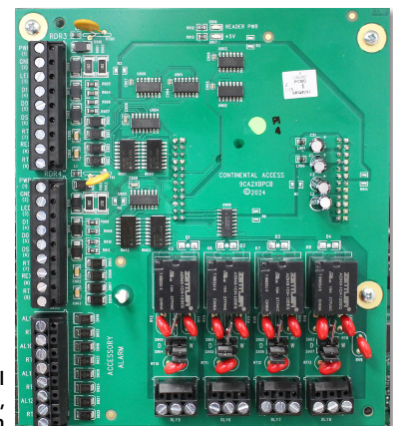


CAPABILITIES (cont'd):

- 50 Holidays
- NVR/DVR integration
- Sophisticated NAPCO Alarm Integration for CA4K only using an IBR-ZREMOTE
- APL Listed for FIPS compliance
- Capable of processing 256-bit cards from card to controller to software
- Battery Backup up to 4 Hours with max reader load. Sealed Lead Acid 7AH Battery included
- Enclosure Size 15.75"H x 13.85"W x 3.25"D (40.0 cm H x 35.2 cm W x 8.3 cm D), 14lbs 6.35 kg, w/ battery.
- Meets UL 62368, UL 294, UL 1076; ETL LISTED. Certified to CAN/CSA STD. C22.2

Optional CA-2XB Two Door Expansion Board

For larger applications, the optional CA-2 supports access control for two doors & two card readers. By adding the CA-2XB expansion board, the system can accommodate two additional doors & two additional card readers, as well as two supervised door sensors & two bypass inputs - making the system a four door controller. The total capacity for the CA-2 with the CA-2XB board is four doors. Supporting 5V (100Ma each) and 12V (200Ma each) readers. Four onboard relays that can be configured as either dry or wet contacts for door strikes or electromagnetic locks, or used as auxiliary relays. The CA-2XB also provides four accessory alarm inputs that can be individually configured as supervised alarms or as standard alarm inputs with basic electrical contacts.



Optional CA-2XB, Shown

Continental Enterprise CA-2 Access Control Panel 2-Doors, Expandable to 4

SPECIFICATIONS

Number of Doors Supported: 4 Doors (with CA-2XB)

Reader Capacity: 2 Readers

Reader Types: Wiegand/Proximity, Magnetic Stripe, Prox and PIN (4 bit, 8 bit, Wiegand 26 bit), OSDP V1

Reader Power Output: Each 12VDC rated @ 200mA; 5V rated @ 100mA

Reader LED Output: 2 active low LEDs, one per Reader (50mA limit)

**Please refer to Appendix B for mapping, as the relay and input numbers programmed in CA4K are not the same as those printed on the board*

Supervised Alarm Inputs: 8 on Board: (2) Door Contacts (2) Request to Exit Devices plus (4) Accessory. Alarm Inputs. All inputs are dry contacts only

Output Relays: 4 on board. Form C, Jumper Selectable Dry/Wet. Each Dry Relay supports a max. load of 2A at 12/24V AC/DC & can support up to 28V AC/DC (Power Limited Circuit). Each Wet Relay supports a total combined load rating of 1.6A at 12VDC only (Power Limited Output). **Note: Take extreme caution** not to exceed the max. allowed current draw of 1.6A (max. +12VDC current draw 1.6A for all four relays).

Note: Both Jumpers Left 2 Pins = DRY Both Jumpers Right 2 Pins = WET

ORDERING INFORMATION:

CA-2 2-Door Controller. Expandable to 4

CA-2XB Two Door Expansion module for above

CA-2PS CA-2 Replacement Power Supply

CA-2MB CA-2 Motherboard Replacement only

CICP1300IOCOMBO: Features 16 supervised alarms and 16 relays, along with an expansion unit that includes battery-backed accessory power. Supports up to 3 I/O boards, allowing for an additional 48 relays and 48 inputs.

CA4K Enterprise Security Management Software v.1.2+

MVP Access Pro Cloud Based Software

MVP Accessories:

MVP Access App Featuring Mobile credentials w/ geo-fencing, Multifactor Authentication (MFA) & remote administrator functions, global/area-specific unlock or lockdown, etc. (IOS or Android)



iLock for MVP Access Mobile App for Bluetooth Mobile Credentials

MVP-IM3-POE Dedicated, Preconfigured MVP POE Gateway, Gen. 3 Power Over Ethernet, No AC power required

MVP-IM3-80211 Dedicated Preconfigured MVP Combo Gateway, Gen 3 Wired/Wireless, supports wireless or hardwire Ethernet connection

PDL6200 Cylindrical Trilogy Networkx PIN/Prox. wireless access control lock w/ built-in HID proximity ID card reader and Door Position Switch/Request to Exit feature & Flashing Lock Down Indicator on Inside Door

DL6200 As above, with full-metal digital keypad only

N90/N95 Series ArchiTech Lock

PDLN4100/PDLN4500 Privacy/Residential Locks

PDL1300NW/DL1300NW Narrow Style Locks

PDL1300ETNW/DL1300ETNW Narrow Style Exit Trim Locks

PDL8200 As above, with iClass support

PDL6600 Mortise Trilogy Networkx PIN/Prox. wireless access control lock w/ built-in HID proximity ID card reader and Door Position Switch/Request to Exit feature

DL6600 As above, with full-metal digital keypad only

PDL8600 PIN/Prox Model as above, with iClass support

PDL6300 Cylindrical Trilogy Networkx double-sided PIN/Prox. wireless access control lock with built-in HID proximity ID card reader

ETPDN Trilogy Networkx wireless access lock trim w/ built-in HID proximity ID card reader

ETDLN As above, with full-metal digital keypad only

ETPDN-RX Trilogy Networkx wireless access lock trim with built-in HID proximity ID card reader with Request to Exit feature

ETPDNI-RX As above, with iClass support

Alarm Lock Wireless Locking: Choice of Native Integrated Trilogy Networkx & ArchiTech Locks in cylindrical, mortise & exit trim models, including PIN/Prox & multitechnology reader opts., NFC, & Lock Bluetooth App, Gateways, standard AL-IM3 Series Gateways & AL-IME2 Expanders



NETPANEL Wireless single-door panel, for universal use w/ most standard IDs & standard Wiegand Readers readers (26-63 bit formats; supports 1 Door/2 Reader (In/Out); Door Position Switch & Request to Exit. (NETDK/PDK not supported; Wiegand only)

AL-IME3-80211 Gen 3 Wired/Wireless Gateway (requires firmware upgrade)

AL-IME3-POE Gen. 3 Gateway, Power Over Ethernet, No AC power required (Supports Gen 2 Expanders (requires firmware upgrade)

AL-IME2-EXP Gen. 2 Wireless Expander (supports Gen 2/3 Gateways) (For use with Both MVP Gateways and Alarm Lock GEN3 Gateways)

AL-IME2-PIE Gen. 2 Plug-in Wireless Expander, AC power required (For use with Both MVP Gateways and Alarm Lock GEN3 Gateways)

RR-1BUTTON Optional single button remote keyfob

RR-4BKEYFOB Optional 4-button remote keyfob

AL-NSG Optional Gateway Simulator Aid

AL-NSM Optional Site Survey Tool for Networkx Gateways

Other Supported MVP Controllers & Locking Hardware for intermixed use with CA-2:

CICP2100S Single-Door Surface Mounted POE Enterprise Access Controller w/ Built in Ethernet Port.

CICP2100 Single-Door Recessed Mount POE Enterprise Access Controller w/ Built in Ethernet Port.

CICP1300 (SuperTwo) Two-Door Enterprise Access Controller (MVP requires NetBoard2 CICP1300NETBD2)

CICP1300NETBD2 NetBoard 2 for CICP1300 for MVP Access Support

CICP2800 8-16 Door Enterprise Access Controller (MVP requires NetBoard2)

CICP2800NETBD2 NetBoard 2 for CICP2800 for MVP Access Support

Select Technical Documents:

WI2698LF CA-2/CA-4 Installation & Service Manual

WI2744LF CA-2XB 2 Door/Reader Expansion Board Instructions

WI2424BLF CICP1300NETBD2 SuperTwo Network Interface Board with Peer-To-Peer Lockdown Instructions

WI2543LF CICP2800NETBD2 Network Interface with Peer-To-Peer Lockdown Installation Instructions

WI2047 CICP2800EXPRDBD8 Reader Expansion Board Installation Instructions

WI2802ALF MVP Access Getting Started Guide for Locksmiths & Locking

WI2819LF MVP-IM3-POE MVP Gateway Installation Guide

WI2818LF MVP-IM3-80211 MVP Gateway Installation Guide



For More on Napco Access Pro & MVP Access Training & Intro Classes see www.napcosecurity.com/seminars >> MVP Access or Tech Video Library on Youtube <https://www.youtube.com/@napcoaccesspro>

NAPCO ACCESS PRO, Continental Enterprise, MVP Access, Trilogy & Networkx are trademarks of NAPCO Security Technologies, Inc. Other marks remain intellectual property of their respect *Supports varying versions Continental Enterprise (Enterprise, CA4K, legacy CA3000, consult tech docs.)

