



NAPCO BLACK BOX™ PROGRAM FOR OEM APPLICATIONS

The Napco Black Box™ Series ArchiTech Networx™ Wireless Networked Mortise Locks are an ideal access control solution; elegantly blending advanced wireless access control convenience within any decor, in an attractive, infinitely customizable designer locking form factor, in choice of trims and finishes. Ideal for standalone, networked or enterprise software platform integrations, these stylish, durable locks, leverage top selling, proven Trilogy Networx access control lock advanced electronics, support a host of ID credentials and reader technologies & styles, plus offer a choice of over 300 Grade 1 lock trims and US architectural finishes. Napco Black Box™ Series Wireless ArchiTech Locks can be used to control access a door at a time with a few to thousands of doors and authorized users; across a wireless network; or as an integral part of a new or existing enterprise security system—spanning one building, a campus, or multiple sites around the world. They team easily integrated, powerful advanced electronics with best in class low energy-consumption circuitry, providing long battery life using standard off-the shelf batteries, for low-maintenance. Popular applications include educational, commercial office or multi-dwelling residential settings, etc.

IDEAL FOR INTEGRATION WITH MOBILE- & CLOUD-BASED APPLICATIONS & USE WITH SMART DEVICES & CREDENTIALS



Any Smart Device can be the Access Key with Advanced Wireless Networked Access Locks:

More secure than a mobile credential used with a smart phone, for security, ArchiTech can be wirelessly linked to pair its lock-stored encrypted data to that of an integrated local or cloud-based database for a unique combination of convenience and clone-proof peace of mind. ArchiTech Series platform support universally compatible Bluetooth LE™ technology, so any smart device can unlock the advanced locks on your door(s); and do so from afar, at a comfortable, customizable range of up to 30 feet away. For even greater security users can also use it with an optional PIN/ passcode, entered on their phone App. OEM applications can be supported by the customizable lock series as well, including other technologies, applications and e-Keys as used for emailing digital eKeys for guests or service temporary access, eg., in hotels, rentals and short-term office, workspace or homestay applications.

CONVENIENT ACCESS CONTROL & LOCKDOWN OPTIONS:

Napco Black Box™ Wireless Locks support a wide range of new and retrofit system credentials from access ID cards, keyfobs, portable pendants/buttons &/or Smart Device with App. Optional keyfobs and mobile Apps can be integrated to provide access convenience or lock-down in an emergency condition. Both global lockdown and unlock are also provided at server, for networked systems.

- For All Applications and Doors - Cylindrical & Mortise models for wood & metal doors, for new & existing applications.
- Customize to Match Any Aesthetic Look, For Every Decor - Durable ANSI. BHMA Grade 1 hardware in over 300 locks, levers, roses and finishes

DESIGNER WIRELESS ACCESS CONTROL LOCKS

Standalone, Networked &/or Enterprise Platform Integration, with Real-Time Management

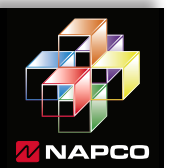


The Napco Black Box™ advanced ArchiTech wireless electronics can either be concealed entirely mortised within door (left) or surface mounted on back (right). Depending on usage/traffic they provide years of use on standard off-the-shelf batteries.

Automatic Deadbolt Lock Feature



Automatic Deadbolt Feature
Uniquely increases security by adding an automatic deadbolt to the standard latch for security even when users forget to relock the door.





Enterprise Integration Applications

With Napco Black Box™ Wireless ArchiTech Access locks it's easy to integrate advanced wireless, keyless access control in custom designer style, in real time, within a full-featured enterprise-class IT &/or cloud-based environment, e.g., Continental Access CA4K, AirAccess or Lenel OnGuard, etc. Ideal for educational, commercial office or multi-dwelling residential settings, durable ANSI/BHMA Grade 1 Locks plus choice of ID credentials & reader technologies, customizable Napco Black Box™ ArchiTech Series Mortise Locks can be added on to control a few or thousands of doors and users, scalable within existing enterprise systems or part of a new building's overall design.



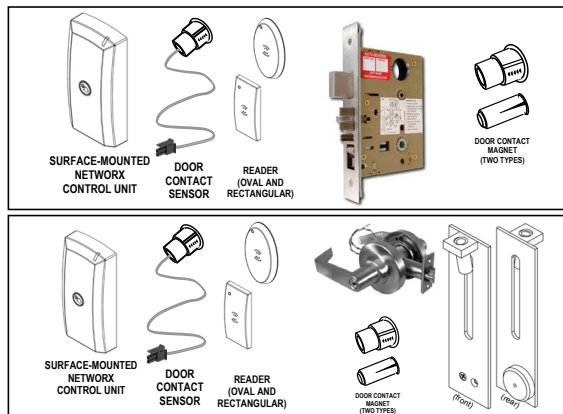
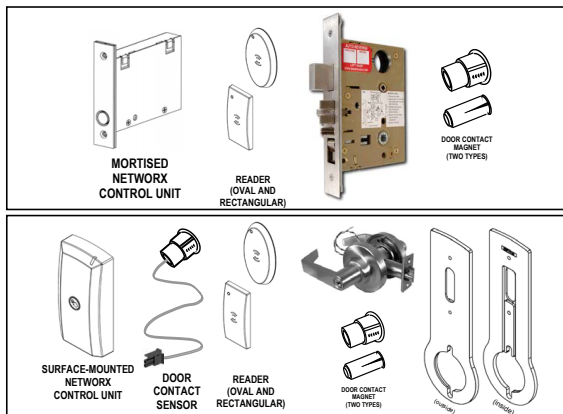
- Risk & security managers can simplify security administration creating an attractive, interoperable enterprise platform for locking, access control, alarms, video, badging, elevator control, visitor management & instantaneous emergency lock-down, for example.
- With infinite finish & trim choices and multiple access credentials, ideal for blending sophisticated keyless access into any aesthetic or application.



- Acting as cost-effective wireless single-door controllers within integrated enterprise security management/software platforms, on site, remote or cloud-based, with integral door position indicator & power built in, these locks act as ideal intelligent edge devices
- Proven low maintenance with durable all ANSI/BHMA Grade 1 hardware and unsurpassed battery-life, with approx. 2 years of use in real-time in high traffic areas using off the shelf batteries



- Support virtually unlimited users & multiple card/ID/mobile tech simultaneously, prox, smart devices, smart cards, PIV cards, magstrips, HID fobs & more



Flexible configuration options - Including mortised-in electronics, concealed reader technology in door (shown Right) and/or surface-mount electronics (as depicted Left), i.e., ideal for retrofitting existing doors, cleanly & neatly replacing standard locksets.



Try out the many combinations of looks and applications for your project's vision at www.DesignLock.com

For more information on customizable trims, finishes and OEM ordering assistance, please contact your local sales representative

