

# Access & Security Solutions from **NAPCO ACCESS PRO**

Education  Healthcare  Business  Transportation  Government



# CA4K

Continental Enterprise



## Continental Enterprise Platform For Total Security Management

**Seamless security solution scalable from entry level through global, multi-site, enterprise applications**

Continental CA4K Enterprise Class Software is a robust, scalable, access control, security & video platform designed for risk and security managers, to provide one flexible, interoperable, integrated security solution, for stand-alone through networked world-class new or retrofit systems, for two to thousands of doors & unlimited users. Field-proven for one or global sites, the scalable architecture & flexibility of the Continental Enterprise software Continental Enterprise provides secure MSSQL technology and open database information sharing with CA Exchange DB import & export features. Continental software can also run as a service, for both security & ease of recovery. From its Security Manager App & mobile-credentials, to anywhere access of remote web client, plus, eagerly-anticipated. cloud-hosted version, this enterprise platform provides an easy to use, easy to train & easy to implement solution for any size facility, including education, healthcare, business, transportation & government.

- Access control
- Alarm monitoring
- Video DVR/NVR interface
- Visitor management control
- Photo badging
- Import/export utilities
- Email and SMS notifications
- Full Wireless lock, Intrusion and fire alarm systems integration
- Turnkey Managed Services
- Open API support
- Threat level management
- Multiple area Anti-Passback (APBs)
- Dynamic map control
- FIPS/TWIC/CAC/PIV/PIV II/MIFARE DESFire card support
- New Biometric Support
- LDAP compliant single sign-ons
- Elevator control
- Global input/outputs/links
- Global lockdown or lockdown by APB area
- Manager Mobile App & Remote web client

## A truly scalable single solution that is easy and economical to use, program, deploy and maintain

CA4K is the right fit, for right now and the future. Whether used on a small system of a few doors, or a multi-site global enterprise with thousands of doors, multiple credential/reader types and unlimited users, the budget-friendly/IT-friendly secure platform is designed to grow with the requirement, eliminating the costly need to upgrade software packages or replace hardware, or both, "down the road", as occurs with other manufacturers. Also, the CA4K one-box solution, frees you from pricey add-on modules for functionality for both functionality & longevity. Yearly upgrade program available.



### Platform Highlights

- Integrated Wireless Locks - More Alarm Lock Network Wireless Lock Models supported including customizable ArchiTech Network, 1-Door Wireless NetPanels & Gen3 Gateways with new offline preconfiguration setup option from any smart device
- LDAP Active Directory Compliant (Lightweight Directory Access Protocol)
- Software Runs As A Service (Desktop applications associated with CA4K may now run as a service)
- More Choices in Integration Partners & Video- Seamless support for Ganz, Milestone, Pelco DS & DX, Salient, Hitron, Integral
- Seamless Napco Alarm Integration - (Gemini & Napco Commercial)
- Support for Super-Speed Continental Accelaterm™ 8 to 16 Door Controllers & uniVerse POE Controllers

### Enterprise Control: from 1 to 32,000 doors

Why not choose a system that your requirements won't outgrow, that's scalable and full-featured enough to fit any size enterprise?

CA4K easily expands to provide growth to over 1,000,000 cardholders per panel, 30,000 access groups and over 32,000 readers per location, *without having to switch or trade up to a more robust software package.*

Despite the name, far more than just card access, Continental systems integrate seamlessly with even more leading third-party manufacturers of CCTV and DVRs; biometric devices and readers, intrusion, fire, locking, & visitor management systems and boast a very competitive feature-set. Be confident that when new requirements arise, the Continental CA4K System you choose today will be up to the challenge for many, many years to come..

Based on open architecture with a Microsoft SQL Server database, CA4K provides Open API support allowing third parties to integrate with our own software and harness the power and speed of our controllers, with models providing full downloads in under 5-minutes & processing over 921Kbps. Continental's open architecture integrates with and supports a wide range of technologies and databases including partitioning, as well as allowing the importing of Microsoft® Active Directory® and Oracle® exports. Also, new CA4K runs as a service for easier restorals, etc.

- Competitively priced - Save on annual software licensing fees and new optional yearly software upgrade program available.
- Access all the features of the system from an easy to learn and use, uncluttered interface
- GUI grid and personnel screens feature quick keystroke commands and shortcuts, allowing you to save filters and preferences for each user, as well as saving search templates for frequently used reports.
- Event driven automation
- Central station reporting option
- Disaster recovery/redundant systems option.

**Threat Level Management & Mustering** Unlimited Threat Level configuration with the ability to assign Lockdown areas to Threat Level with system level allow or deny access, enabling managers to more quickly react to present threats, by instantly deactivating access privileges, by badge, or by whole badgeholder groups, with a mouse click Fifteen assignable threat level groups; color-coded levels; each group independently controlled + Muster List Reporting.

**Single-Door Wireless Access Lock Integration** Top-Rated Alarm Lock Trilogy Network's & Architech Designer Keyless Entry Locks act as single-door controllers right on the CA4K System in real time. One-hour wireless lock installation, brings power, HID reader and door-position contact to any opening without any wires! (All models supported including iClass. They're intelligent edge devices)

**Lockdown and enhanced security features.** Activate global lockdown by badgeholder, operator or script, including free access doors, deployed by single or multiple APBs. Two person control requires 2 users to authorize access if desired, while anti passback, timed anti passback and assigned occupancy limits are all standard features.

**Labor-saving access manager features.** With EZ First-In Management, presenting one badge can enable systemwide actions for groups of cardholders. A manager activates their department and assign access, rather than security or HR labor. Controlled via software (not relays).



**Manage Total Security Your Way - The Easy Way**



**Easy** - CA4K was designed top to bottom to be Super Easy to Install, Program & Use



**Open System API for easy new or future integration**



**Wireless Access Options** - Wireless Real-time Networked Access Locks (PIN code &/or built-in smart card readers) & Gateways; New Wireless &/or POE Controllers



**Comprehensive Web Client** - Secure total control from anywhere



**Labor-Savings** - Dramatically decrease installation time and costs for easiest deployment and little/no downtime



**Simultaneous Multi-Credential Support** - Ideal for retrofits and fully compliant for TWIC/CAC/ FIPS 201 credentials. Mobile credentials, too



**Managed Services** - Turnkey dealer program for new RMR producing, cloud-based access & managed services for integrators



**Fastest, Fully-Distributed Processing** - Door-opens in a fraction of a second & fastest full downloads in minutes



**Flexible, Versatile & Scalable** - Grows & keeps pace with any application, from a few doors and users to many thousands, without the need to replace software or hardware



**Lowest TOC - Lowest Total Cost of Operation** - Proven low maintenance; upgradeable hardware with longest warranty; longest battery life on wireless devices; no annual license fees



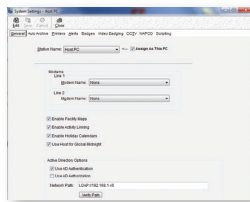
**Integrates Well with Others** - Seamlessly integrates with alarm systems & expanding list of video, DVR/NVR biometrics, intercom and other technology partners



**Cloud-Hosted Enterprise Version Coming Soon!**

## LDAP Active Directory Compliant

(Lightweight Directory Access Protocol) for streamlined operator log-in processes.



## InterAccess - Open API Support.

Provides third party custom application integration allowing for infinite possibilities, as relates to current or future system functionality with CardAccess. (An API is a set of routines, protocols, and tools for integrating external software applications.)

**Time and attendance/payroll.** Track and report in and out card reads for individuals or groups. Establish rules, adjust payroll hours (administrators), create reports and export to payroll processing companies.



**Visitor management.** Scan a person's driver's license, passport or business card and automatically enroll them into CA4K. Print their badge, do a background check, scan live against gov't/police "Watch Lists", and provide precise visitor access privileges with user definable visitor fields to specified areas. Allow your visitors to pre-register and receive a barcode via email.

**Photo badging.** Easily capture employee images, add custom text and graphics, create custom card layouts and print ID cards or credentials with magnetic stripes, barcodes, smart chips and/or holographic images with advanced WYSIWIG virtual badge viewer. Supports most common image capture devices. (Now supports EPI Suite on 64-Bit computers, too.)



**Global inputs/outputs and global activity links.** System wide and individual device control; enable/disable, undo, time schedule, etc. Global control using hi/low counters, such as for parking garage control, etc.



**CA ExchangeDB - Import / Export Utilities.** Provides data exchange of badge and personnel data, export of time and attendance data, import-export of photos for an open exchange between ERP (human resources and IT management) and other database systems, which support import/export (e.g. Oracle).

## Seamless intrusion, fire & locking integration

Continental CA4K integrates access control, alarms, locking and video systems allowing user-specified alarm events to be displayed on the CA4K alert/event grids. An alarm event can trigger automatic locking/ unlocking of doors and presentation of live and pre/post video. When the system is armed, only personnel authorized to disarm the security system will be granted access.



- View and control alarm and locking events with assigned event and alert priorities.
- Arm/disarm alarm areas manually, by-schedule, by-card.
- View real-time status of all zones and devices, including armed or disarmed state of the alarm area on the reader.
- Set permissions and logging of users for alarm-, locking- & access control systems.



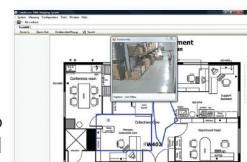
## Elevator Control - Hardware & Software Integration control, Including OTIS Elevator® support

- Control access and track who gets off and on at which floor.
- Easiest scheduling and programming: Apply access group to entire relay bank. (No discrete relays to handle individually.)
- Integrate with elevators' CCTV cameras, DVR/ NVRs & motion. - Control & view with 1 GUI.
- Supports biometrics, PIN codes, prox and smart cards, etc.
- Pinpoints breaches or attempts to access restricted floors.



## Dynamic maps - on screen control

CA4K Dynamic Maps provide a choice of viewing the system from the CA4K Event Grids or the map view. From the map view you can see high priority alerts as text and acknowledge those alerts as you would from the CA4K grid controls. All devices in the CA4K system can be seen and checked from the dynamic map for status, such as doors status and system relays, readers and input status. You can view live video from any camera on the map or replay recorded video conveniently tagged with a camera icon, to replay video from that exact event.



## No matter where you are, stay in touch & total control with Managers App & Remote Web Client

CA4Ks App & Remote Web Client provides remote system management through standard web browsers - no proprietary software to load - all work internally through your LAN or remote Internet.

- Complete remote updates
- Full hardware configuration of panels, relays and inputs
- Remote un/locking of doors and relay activation
- Access to view events, time & attendance: personnel/ and badging changes and in-list reports.
- Web Interface standard in CA4K enables complete remote control & oversight of system from anywhere, e.g., using smart devices.



## Comprehensive cross time zone support

Enables various facilities in different time regions to see their events, as well as those of other facilities, based on the local time setting. Events can still be filtered to show just one facility or any portion. Panel configurations allow assignment of a panel to a particular time zone and each CA4K Workstation can view events based on either the local Windows time setting or the event's absolute time. View or report any events in your local time region, even if your CA4K server is centrally administrated half way around the world.



## CA4K speaks their language

- Multilingual operator support & custom language entry
- User's language auto-loads with their log in
- Preset languages: Arabic, Danish, Dutch, English, French, Greek, Polish, Portuguese, Russian and Spanish with custom language entry supported, too.

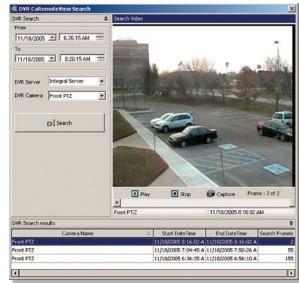


Central station reporting option -Ideal for Security Offices The CA4K software can report alarm inputs to a central station over an ethernet connection saving valuable time & toll calls. Alarm inputs can be configured for optional reporting to the Napco NetLink receiver in addition to the CA4K system alert grid.

# CA4K® Offers More Integration Partners & Options

## Infinitely scalable video solutions, for systems old and new, in one or multiple sites

Install multiple cameras in multiple locations with virtually unlimited users, from a few cameras on one server to thousands of cameras on multiple servers. Interface with a nearly unlimited number of analog, digital and IP cameras, plus DVRs/ NVRs from an increasingly expanded list of manufacturers. Features include triggering of pre and post recording, viewing of live and recorded video associated with an event; recording indicators, displaying motion triggered recording as an alarm event and one click viewing of recorded video, all from the CA4K event screen.



- Manage video from a single desktop, locally or remote.
- View up to 64 cameras from a single screen or choose the views you want. Unlimited viewing layouts per user, with multiple monitor support
- Single seat administration tightens security and lowers costs.
- Supports nearly all leading IP and analog cameras and encoder manufacturers - you choose the best camera at the best price.
- Reduce costs with Active Directory and LDAP
- Systems are available pre-configured to save manpower costs, or customizable to save equipment costs.
- Easy installation, less training, easy administration and painless licensing
- Video doesn't interfere with existing applications and uses less bandwidth to reduce the costs associated with network capacity.

## Intuitive interface makes working with archived video easy

- Pan-tilt-zoom, including motion detection within archived video
- Access synchronized video from multiple servers. Export images & video evidence files
- Instant retrieval from any camera or server by time, date or motion events. Includes scrollable events timeline
- SmartSearch technology saves time by applying motion filters to highlight activity

## CA4K Robust Platform:

- Card capacity up to 1,000,000 cards on later generation panels
- Event Transaction storage limited only to hard drive size
- 30,000 access groups
- 5 Holiday calendars with 100 holidays each
- Over 12,000 readers and 112,000 relay outputs per location
- Database partitioning (Ideal for Dealer hosted business model)
- Over 124,000 supervised alarm inputs per location

## Server and Database

### Single & Multi-Server Systems Operating Systems

- Microsoft Windows 10 Professional
- Microsoft Windows Server 2012 R2
- Microsoft Windows Server 2016; 2019

### Database Engine

- Microsoft SQL Express 2019, 2017, 2016, 2014, 2012 (For Higher Performance, use full version of Microsoft)
- Additional communication & redundant server support
- TCP/IP communication to controllers

## Access Control

- Unlimited cardholder database (SQL)
- Database partitioning
- Card capacity up to 1,000,000 cards on later generation panels
- Transaction storage limited only to hard drive size
- 30,000 access groups
- 5 Holiday calendars with 100 holidays each
- Over 12,000 readers and 112,000 relay outputs per location

## Alarm Monitoring

- Over 124,000 supervised alarm inputs per location
- Photo recall and/or video pop up on alarm
- Custom sound files per alert
- Color coding of priority events
- Single acknowledge or acknowledge all capability

## Unsurpassed Card/Reader Processing Speeds & Multitasking

- Super-fast door open times at a fraction of a second, even processing full cardholder CHUID numbers.
- FIPS/TWIC Full reader support, including Biometric compliant FIPS201, TWIC; FRAC, CAC-NG; 26 to 256 bit cards. Support for Mifare DESfire. Ideal for local, municipal, state and Federal Government applications
- Complete FASC-N software support, badge expiration evaluation, autonomous fast badge evaluation in all firmware at control panels.
- Validation of ID card certificate and continuous monitoring of Government Revocation List (programmable frequency).
- Enrollment Station Reader - Both validates certificate from Government website and auto-populates cardholder data - eliminating data entry/ errors

## Multitasking Reader Technology Support

- Biometric, Smart Card, Proximity, Wiegand, X-Y matrix keypad, barcode, magnetic stripe + those built-into our Trilogy Network or Network Architech locks (shown at left)
- Simultaneous multiple credential and reader format support, from cards and fobs to biometrics and mobile credentials

*The configuration used for the per location capacities include CA4K SQL software, select Continental panels and two secondary com servers.*



# Continental Enterprise: POE & Conventional Controllers



Features & Capacities (With Continental Enterprise Software, eg. CA4K)	CACP2100	Networkx Panel	CACP1300	CACP2800
<b>Part Number</b>	CACP2100, CACP2100S	NETWORKXPANEL	CACP1300	CACP2800
<b>Technology</b>	POE or Ethernet	Wireless Device Support	Conventional	Conventional
<b>Credential Capacity</b>	20,000 to 200,000	Up to 5000	20,000 to 125,000	40,000 to 1,000,000
<b>Number of Reader Ports</b>	2 (in/out on 1 door)	1 or 2	2	8 or 16
<b>Number of Doors</b>	1	1	1 or 2	1 - 16
<b>Anti-Passback</b>	Yes	Yes	Yes (1 Door)	Yes (8 Doors)
<b>Matrix Keypad Capacity</b>	No	No	Yes, Add-on Module	No
<b>Duress Keypad</b>	Yes	Yes	Yes	Yes
<b>On-Board Supervised Inputs</b>	4	No	8	24 (8 Door) or 40 (16 Door)
<b>Additional Inputs Expansion</b>	No	No	48	48 (8 Door) or 32 (16 Door)*
<b>Tamper Input</b>	Yes	No	Yes	Yes
<b>On-Board Relay Outputs</b>	2	2	5	17
<b>Relay Output Expansion</b>	No	No	48	48
<b>Relay Output Contact Rating</b>	2.5amps @24vdc/vac	8amps @ 30VAC or VDC	3amps @ 24vdc/vac	2.5amps @24vdc/vac
<b>"On-Board" Communication Ports</b>	Ethernet	WiFi, IEEE 802.11b, 802.11g	RS232/422	Ethernet
<b>PC to Control Panel Communications</b>		***** Serial / USB / Modem / TCP-IP / Fiber Optics / WiFi / Polling Line Converter *****		
<b>Communication Baud Rates (BPS)</b>	Up to 921Kbps	900 mhz spread spectrum	Up to 57.6Kbps	Up to 921Kbps
<b>Power Input</b>	12VDC or POE	16.5 vac, 50 VA Transformer	120/230vac	120/230vac
<b>On-Board Battery Backup</b>	No- Must provide external backup pwr.	Approximately 2 hours at Full Load	Yes (4 to 6 hours)	Yes - 3-4 Hours with 2-12AH batteries at max load (Batteries not included)
<b>On Board Lithium Battery to preserve memory</b>	Yes	No	Yes	Yes
<b>+12V Reader Power Output</b>	700ma @ 12VDC	250ma @ 12V	1.2amps @ 12vdc	350ma max. @ 12V (per reader)
<b>+5V Reader Power Output</b>	320ma @ 5VDC	800ma @ 5vdc	100ma @ 5vdc	1.5A@ 5VDC (total for all readers)
<b>Auxiliary Power Output</b>	700ma @12VDC including Rdr Pwr.	12 Volts @ 1.5 amps	1.2amps @12VDC	600ma
<b>Diagnostic LED's</b>	Yes	No	Yes	Yes
<b>Firmware Upgrades</b>	Flash ROM	Flash ROM	Flash ROM	Flash ROM
<b>On-Board Transient Protection</b>	Yes	No	Yes	Yes
<b>On-Board Memory</b>	4MB	N/A	512K	4MB
<b>Memory Expansion</b>	No	No	2MB	20MB
<b>Time Schedules</b>	256	99	256	256
<b>Access Groups</b>	30,000	99	30,000	30,000
<b>Holidays</b>	5 x 100	5 x 30	5 x 100	5 x 100
<b>Event Buffer Capacity</b>	1,000 to 10,000	5000	1,000 to 10,000	1,000 to 10,000
<b>Compliances</b>	UL294, ULCS319, CE	N/A	UL294, CSA C22.2	UL294, UL1076, CE

\*An 8 Door Accelaterm can have up to 3 I/O Expander Boards added to it, unlike the 16 Door Accelaterm, which is limited to 2 I/O Expander Boards.

**Napco Access Pro now also offers Embedded Linux-Based Self-Contained Web-Browser-Based System Controllers**

# Continental Enterprise: Configurations & Software Options

## CA4K Enterprise Software Platform - Minimum Requirements

- CPU Intel Dual Core, 2.6 GHz, min. (server w/ 1 to 4 workstations, workstation or report station); Xeon Quad Core, 2.0 GHz, min. (5-19workstations)\*\*
- RAM 8 GIG, min. (server w/ 1 to 4 workstations, workstation or reportstation); 16 GIG, min. (server w/ 5-19 workstations, workstation or report station)
- Hard Drive 300GB, min. (server w/ 1 to 4 workstations, workstation or report station); 500GB, min. (5-19 workstations)\*\*
- Backup Network, DVD, CD
- USB Ports 4,min.
- Serial Ports, Optional 1 Expandable to 64
- Ethernet (NIC) 100/1000Mbit
- Display 17" or greater (1500 x 900, min. resolution)

\*\* Note: All configuration specs, not shown. For complete configuration reqts. including 20+ workstations or database server, etc. please see Full CA4K Technical Documentation or consult factory.

### Common Configurations:

CA41001S	CA4K Single User Software. Includes file server software and SQL Express Database with a software security key.
CA41005S	CA4K Software, supporting up to 5 Users. Includes file server software and SQL Express Database (full SQL recommended for larger databases and higher performance) with a software security key.
CA41010S	CA4K Software, supporting up to 10 Users. Includes file server software (full SQL required - not included with CA4K) with a software security key.
CA41025S	CA4K Software, supporting up to 25 Users. Includes file server software (full SQL required - not included with CA4K) with a software security key.

\*\* Contact Sales Rep for 50+ Workstation Quotes\*\*

## CA4K Servers and Workstations

CA4SRV1 (single user system)	CA4K server, PC only - includes 17" SVGA monitor, keyboard and mouse.
CA4SRV5 (five user system)	
CA4SRV10 (ten user system)	
<b>Note:</b> All software configurations are available, pre-loaded on CA4K recommended hardware. Contact Continental for more information.	
CA4WKS	CA4K workstations, PC only - includes 17" SVGA monitor, keyboard and mouse.

Continental reserves the right to change or discontinue part numbers at any time.

## CA-ASA Access Server Appliance Specifications

- Small Form/Fit (4L" x 4W" x 2H")
- Intel Processor
- 8 GB RAM
- 3 USB Type A (v3.1) Ports
- 2 USB Type C Ports
- HDMI (2.0A) Port
- 250 GB Solid State Drive
- 128 GB Thumb Drive
- T-base 10/100/1000 Network Port
- Win10 Pro Operating System
- CA4K Five User Software Pre-Installed
- SQL Management Studio Included
- Preinstalled: Manager App, Web Interface Network Programming, TeamViewer & Automatic Backup Utility
- Flexible Mounting Bracket included
- Computer keyboard and mouse included



## Additional CA4K software options

CA4VrNuK (as above, plus) DvCAITv	where: Dv = # and type of CA DVR/NVR servers (00=none; 11 - 1 DVR/NVR; 12 - 2-4 DVR/NVR; 13 - 5-9 DVR/NVR...) C = # of CA Secondary Communication (Remote Com) Servers (0,1 or 2) A = # of CA Napco Alarm Integration Servers (0, 1, 2, 3, ... , 9) I = CA InterAccess API Interface (0 = no, 1=yes) Tv = CA Time Keeper & CA Visit Components (0 = none, 1=CA Time Keeper, 2= CA Visit, 3 = both)
--	---

### Notes:

1. When ordering any additional software options, all six software option digits must be specified. If ordering the base software only, none of the option digits need to be specified.
2. Field upgrade of software features is supported by use of the software key. Contact Continental for more information.
3. Not all optional software features are available in all software versions. Contact Continental for more information.

## Common Configurations:

CA41001S110000	1 user (software key) CA4K base software with 1 DVR/NVR Server.
CA41005S002000	5 user (Software key) CA4K base software with 2 Secondary Com Servers.
CA41010S000510	10 user (Software key) CA4K base software with 5 Napco Alarm Integration Servers and the CA InterAccess API.
CA41025S250001	25 user (Software key) CA4K base software with 5 DVR/NVR Servers and CA TimeKeeper component.
CA41005S000002	5 user (Software key) CA4K base software with CA Visit
CA41010S172413	10 user (Software key) CA4K base software with 7 DVR/NVR Servers, 2 Secondary Com Servers, 4 Napco Alarm Integration Servers, the CA InterAccess API, CA TimeKeeper, and CA Visit.
EPIISOFT	CA4K Badging software key.

### Note

The CA4K badging software is optionally loaded on any software installation, but requires an additional software key for activation. Continental reserves the right to change or discontinue part numbers at any time.



# Continental Enterprise Integrated Access, Wireless Locking, Video, Intrusion & Fire Alarms



## Continental Enterprise Integrated Access Locking, Video, Intrusion & Fire Alarms

### Continental Enterprise Controllers

SuperTwo CICP1300  
 Accelaterm CICP2800  
 uniVerse CICP2100 w/POE

Expandable to 4,000  
 Control Panels Maximum

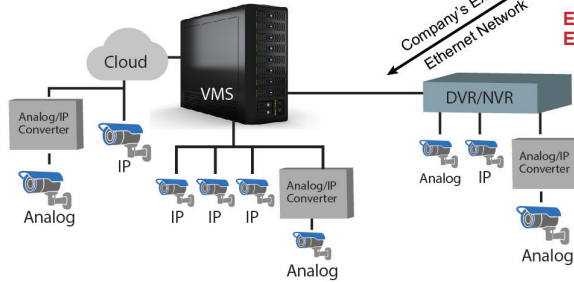
### Server/PC with Continental CA4K Enterprise Software



### Wireless Access Locks, Network® & ArchiTech®

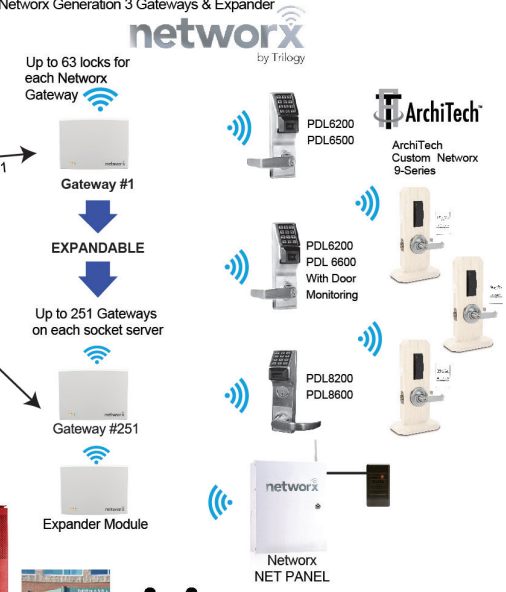
- PDL6200, PL6200 (Cylindrical w/Door Monitoring)
- DL6200, DL6500 and DL6600
- PDL6500, PL6500 (Mortise)
- PDL6600, PL6600 (Mortise w/Door Monitoring)
- ETPDLN, ETPLN, ETDLN (Exit Trims)
- PDL8200, PL8200, DL8200 (Cylindrical w/Door Monitoring and iClass support)
- PDL8600, PL8600, DL8600 (Mortise w/Door Monitoring and iClass support)
- NET PANEL (One Door / Two Reader Wireless Controller)
- ArchiTech Network 9-Series - Customizable & Multi-technology readers
- Network Generation 3 Gateways & Expander

### Video VMS Software & IP/Analog Integration via Cloud or LAN



Existing Corporate Ethernet Network

### Napco Burglary/ Fire Sytem Integration & Alarm Reporting



Choose from a Growing List of Video Partners: Video Insight®, Exaq®, Milestone®, Pelco® DS & DX, Salient®, Hitron®, Integral®, Avigilon®, & Ganz®



## Continental Enterprise



NAPCO Access Pro, Continental Enterprise, CA4K, Gemini, Alarm Lock, Trilogy, Network & Architech are trademarks of NAPCO Security Technologies, Inc. Other marks remain intellectual property of their respective cos, ©2023.7 A460F

Get Expert Advice from a Certified Napco Access Pro Dealer:

